

GRAHAM WATKINS & CO

CHARTERED SURVEYORS, ESTATE AGENTS, AUCTIONEERS AND VALUERS



Genuine Dispersal Sale On behalf of the late Mr C G Bourne

SATURDAY 20TH APRIL

REDACRE HALL FARM

Simpson Lane, Pott Shrigley, Macclesfield, SK10 5SF

Sale to Commence at 10:30am

To include:

TRACTORS- 2016 Deutz-Fahr 50800 Tractor c/w Trima Loader, only 1034 Hours; Lamborghini 105 Power speed Tractor; Lamborghini 874-90 Tractor c/w Loader; Ford 6600 Tractor; Massey Fergusson 35 Tractor; International 674 Tractor; International 674 Tractor c/w Loader; International 785 Tractor c/w Loader.

DIGGERS - JCB 3CX Turbo 1986 Year; JCB 8027 Digger 2005 Year, 1777 Hours

THE USUAL RANGE OF FARMING EFFECTS AND SUNDRIES

Enquiries to 07375 105985 or auctions@grahamwatkins.co.uk

Auctioneer's Comments

Graham Watkins & Co are favoured with the instructions to be holding a genuine and complete dispersal sale on behalf of the executors of the late Mr C G Bourne. The sale holds a good number of tractors and machinery, all of which have been very well looked after. Bidders should bid with confidence at this genuine dispersal sale.

The sale will commence at 10:30am.

Directions

From Leek, take the A523 and after approximately 6 miles turn right on to Leek Old Road toward Rushton Spencer. Continue through Bosley and Macclesfield through to Adlington. When reaching Adlington, turn right on to Brookledge Lane by The Legh Arms. After approximately 1.6 miles bear left on to Shrigley Road. After about a mile Redacre farm is on the left-hand side. Adequate "To The Sale" signs will be erected on the morning of the sale.

What3Words location code: ///benched.stray.scarecrow

Telephone Numbers

**ANY ENQUIRES PLEASE CALL THE SITE PHONE –
07375 105985**

Auctioneers:-

Robert Watkins BSc (Hons) MRICS FAAV – 07929 946652

Graham Watkins MRICS FAAV – 07976 370894

Edward Groves BSc (Hons) – 07964 510145

Viewing and Inspection

Strictly on the day of the sale.

Buyer's Premium

Buyers' premium is not applicable.

Refreshments

A caterer will be in attendance for the sale of light refreshments.

V.A.T.

VAT at the standard rate **will be applicable on the majority of items**. Any items that do not attract VAT will be announced at the time of sale.

VAT Number: 157179735

VAT on Export Goods

Under regulations imposed by HM Customs & Excise, the auctioneers must account in a proper manner for VAT on export goods. Therefore, customers must pay all the VAT on the purchase price of goods on sale day. On receipt of all relevant export documentation and bills of lading (which must be received in the prescribed time limits), the auctioneers will then refund relevant VAT sums.

Payment

Payment is to be made by either cheque or cash, please note that under money laundering regulations, the auctioneers are unable to accept cash in sums greater than 10,000 euros or sterling equivalent. Please contact the auctioneers to discuss methods of payment if you have any further queries. Direct bank transfers can also be accepted.

Persons unknown to the Auctioneers and who pay by cheque will have their goods impounded until their cheques have cleared.

The Auctioneers reserve the right to refuse a bid off any potential unknown customer.

Export Purchasers

All goods must be paid for in pound sterling (£).

Conditions of Sale

As exhibited at the time of sale. All statements in this catalogue as to any lot are made without the responsibility on the part of the vendor or the auctioneers.

Notice to Attendees

Purchasers should be aware that at the fall of the hammer the sale is affected and the lot(s) sold become the responsibility of the successful bidder. The auctioneers **CAN NOT** be held responsible for any loss or damage to any lot(s) sold

SUNDRIES

Large Qty Timber
Corn Barrow
Aluminium Step Ladders
2 x 3ft Stone Troughs
1 x 4ft Stone Trough
2 x Metal Tables
5x Filing Cabinet
Metal Shelving
New Aluminium Fire Bin
Gas Blow Lamp
Work Benches
Circular Saw
Qty Metal Tubing
Aluminium Bin
PVC Gutters
Qty Cast Iron Gutter
Qty Dried Logs
Sledge
Hose Pipe Reel
Extension Reel
Complete Tower Scaffold
Car Tyres
Qty Paint
Qty Electric Cabling
Spirit Level
Qty Oil Filters
Filing Cabinet
Workzone Socket Set
3 Ton Trolley Jack
Qty Wire Rope
Qty Chains
Metal Work Bench & Vice
Qty Oil Drums
Qty Rope
Belle Mini 140 Electric Mixer
(With Stand)
Metal Door Hinges
Metal Cutter
Pipe Reel
Belt Driven Mixer
Qty Hydraulic Hoses
Qty Scrap
2 x Axle Stands
Metal Stairs
Metal Girders
Qty Pipe
Wooden Work Bench
Extension Reel
Double Extending Ladders
Large Qty Mesh Wire
Metal Folding Table
Qty Aluminium Signs
Qty Tools
Qty Saws
Work Bench & Vice
Copper Piping
Qty Jerry Cans
Wheelbarrow Wheel
Pipe Bender
Qty Air Hoses
Tooltec Plus Pillar Drill
Qty Shovels
Qty Bench Grinders
Ratchet Straps
Gas Axe Head
Workzone 25pc Spanner Set (New)
2 x Metal Fuel Tanks
Qty Tubing
Tower Scaffold
Anvil
Filing Cabinet
Metal Table & Vice
Qty Perforated Pipe
Mountfield RV 150Lawn Mower
Workzone 110v Concrete Breaker
Compressor
Fox Lawn Ranger 400 Strimmer
(Petrol/Walk Behind)
Countax Ride-on Lawn Mower
(With Grass Box)
Belle Electric Mixer (With Stand)
Ornamental Table
Workzone Compressor
Chop Saw
Transformer
Electric Table Saw
Workzone Titanium Pressure
Washer (Honda Engine)
Titan Electric Bandsaw
Table Saw

SUNDRIES Cont'd....

Chain Saw
Stihl Disc Cutter
2 x Workzone Cordless Drill
Electric Disc Cutter
Workzone Electric Chain Saw
BMC Chainsaw
Electric Plains
Chainsaw
VP1340 Low UIP Wacker Plate
Honda Engine/1ft6
Chainsaw
Bandage Band Saw 240v
Air Compressor
Parkside Welder
Submersible Pump
Einhell Petrol Strimmer
Kawasaki TG20 Strimmer
Kawasaki TG18 Hedge Trimmer
Oregon Chain Saw
Bottle Sack
Knock Down Box
Clarke Weld Mig 230TE Welder
NU Tools Pillar Drill 240v
Band Saw on Metal Stand
Chop Saw & Metal Stand
Qty Garden Tools
Welder
ABAC LT200 Air Compressor
Band Saw
2010 WRAG Hydraulic Log Splitter
Metal Table Saw
Welder

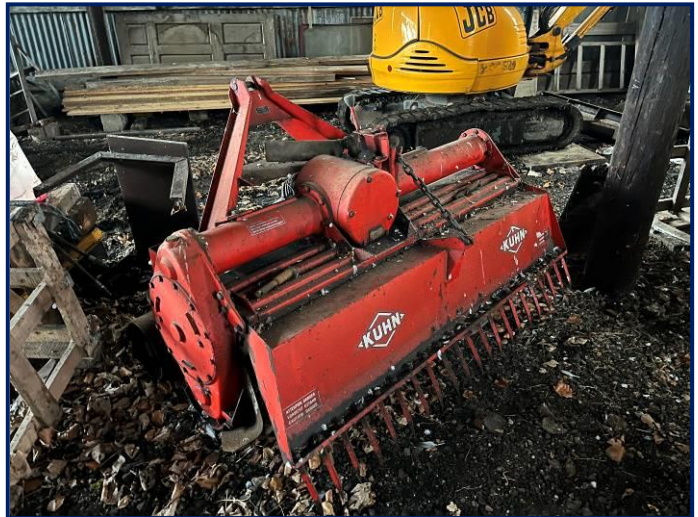
FARMING EQUIPMENT

Milk Bucket
Wash-up Trough
Salter Scale Heads
Free Standing Metal Feed Trough
Disbudding Set
Metal Wheelbarrow
5 x Nap Sack Sprayers
Hook Over Trough
Qty Water Bowls
11 x Hook on Troughs
2 x Rolls Barbed Wire (New)
2 x Rolls Sheep Netting
Bale String
Sack Truck
Sheep Netting
Metal Wash-up Trough
Sack Trolley
Quad Bike Sprayer
2 Hand Post Knocker
Qty Metal Electric Fence Stakes
Metal Wheelbarrow
PTO Pump
12ft Galvanised Water Trough
Silage Pusher
Large Wash-up Trough
6ft Galvanised Water Trough
Cow Brush
Wash-up Trough
Qty Galvanised Gates
34 x Wooden Posts
Qty Top Links
2 Hand Post Knocker
Bale Spike Spares
2 Metal Wheelbarrows



IMPLEMENTS

Flemming Transport Box TB5
(2014 Year)
6ft Flail Mower
(With Hydraulic Side Shift &
Rear Roller)
Elephant Bale Grab
(Trima Brackets)
McConnell Power Arm Hedge Cutter
(4ft Cut, Rear Mounted)
McHale Elephant Bale Squeeze
(MX Brackets)
Rear 3 pl Muck Scraper
Bale Squeeze
(Round Bales, MX Brackets)
Rear Mounted Pallet Forks
Flemming 6ft Transport Box
Pallet Forks, (MX Brackets)
Wrag Power Sling Post Kicker
(Hydraulic Slew, 2010 Year)
Dolley Trailer
Transport Box
Single Axle Trailer
8ft Metal Field Roller
Logic Contact 2000 Weed Wipe
10ft Einbock Grass Manager
Agrimaster KL250sw Flail Mower
2004 Year
Hardi NL 360 Sprayer
Trailer Extension Sides
Amazone Fertiliser Spreader
Kuhn 6ft Rotovator
With Rear Harrows
Mole Plough
Slewatic Muck Grab
4ft Bucket
5ft Bucket



TRAILERS

Marshall Single Axle Twin Ram
Hydraulic Tipping/Bale Trailer
Wooden Floor, 16ft

Indespension Plant Trailer
10ftx4ft6

Metal Single Axle Slurry Tanker
With Pump

Trailer with Sides

Single Axle Drop Side Tipping
Trailer

(Metal Floor)



JCB 8027 Digger

2005 Year, 1777 Hours

Quick Hitch, Tracks 35%

Hydraulic Slew, Perkins Engine

2 Speed Tracking, c/w 4 Buckets



JCB 3CX Turbo 4x4

1986 Year, 7103 Hours

Reg' C761 NVL'

Tyres 50% Rear 10% Front

Hydraulic 4 in 1 Front Bucket

Extending Rear Arm

Rear Extending Legs

Hydraulic Slew



International 674 2WD Tractor

1974 Year, 3012 Hours

Reg 'WMA 975M'

Rear 3PL, 2 Spools, 2WD

Front Tyres 20%

Rear Tyres 80%



International 674 Tractor C/w Loader

1980 Year, 5929 Hours

Reg 'DBR 123W'

2 Spools, Rear PTO + 3PL

Pick up Hitch, Radio, 2WD

Front Tyres 80% 7.5-16

Rear Tyres 80% 13.6/12-36



International 785 Tractor

C/w ALO Loader

1984 Year, 7012 Hours

Reg 'A308 CAW'

2 Spoils, Rear PTO + 3PL

Front Tyres 60%, Rear Tyres 80%, 16.9/1234

Radio & Heater, 2WD



Ford 6600 Tractor

1978 Year, 5,856 Hours

Reg' SAM 352S'

2WD, 8 Speed Gearbox

Hi/Low, 1 Spool

Pickup Hitch, 2WD

Rear Tyres 13.6/R38, 80%

Front Tyres 7.5/16, 60%, Radio & Wipers



Massey Ferguson 35 Tractor

1959 Year, 2428 hours

Reg 'UED 359'

3 Point Linkage

3 Speed Gearbox

2WD



Deuts Fahr 50800 Eco Line Tractor

C/w Trima x31 Loader

2016 Year, 1034 Hours

Reg 'SN66 AHJ'

3 Spools, Rear PTO

Rear Pick up Hitch, Airconditioning

2 & 4WD, 5 Speed Gearbox

Front Tyres 95% 360/70 R20

Rear Tyres 95% 420/70 R30



Lamborghini 874-90 Powerspeed 90 Turbo Tractor

C/W MX75 Loader

1999 Year, 5,337 Hours

Reg 'V146 KFM'

3 Spools, 3PL & PTO

Pickup Hitch, 4WD

Rear Tyres 16.9/R34 50%

Front Tyres 14.9/R24 50



Lamborghini 105 Powerspeed 4WD Tractor

1992 Year, 5,283 Hours, 40kph

Reg 'K940 KLG'

4 Spools, 3PL & PTO

Pickup Hitch, 4WD

Air Con & Radio



Ford Transit Tipper

Reg' R938 XOB'

1997 Year

50,571 Miles

5 Speed Box

3 Seats



FURNITURE

Pine Table

Mahogany Cupboard

Dark Wood Display Cabinet

Qty Brass

2 x Dark Wood Sideboards

Dark Wood Bureau

3 x Dark Wood Wardrobes

Copper Urn

Dark Wood Blanket Box

Sewing Machine

Drop Leaf Dark Wood Table

Dark Wood Chest of Drawers

Foulks of Bakewell Grandfather Clock

Drop Leaf Table

Chest of Drawers & Mirror

2 x Dressing Table



Health and Safety

It is expressly brought to the bidders attention that at the time of sale any item of plant, machinery, equipment etc contained in the lot(s) may not necessarily comply with the health & Safety at Work Act 1974 or any other Acts or Regulations there under governing the use of that Plant, Machinery, Equipment etc in a working environment. Successful bidders for any such items are hereby required to ensure that the use of any such items at a place of work within the United Kingdom do not contravene such relevant Acts or Regulations.

Persons attending the sale must note that a sale site is a potentially dangerous place. Flammable, noxious, corrosive and pressurised substances maybe present, heavy equipment is being operated and electric circuits may be live.

Every person at the sale site shall be deemed to be there at his/her own risk. All children must be supervised at all times. No persons shall claim against the auctioneers, their agents, employees or principals for any injury sustained, nor damages to or loss of property which may occur.

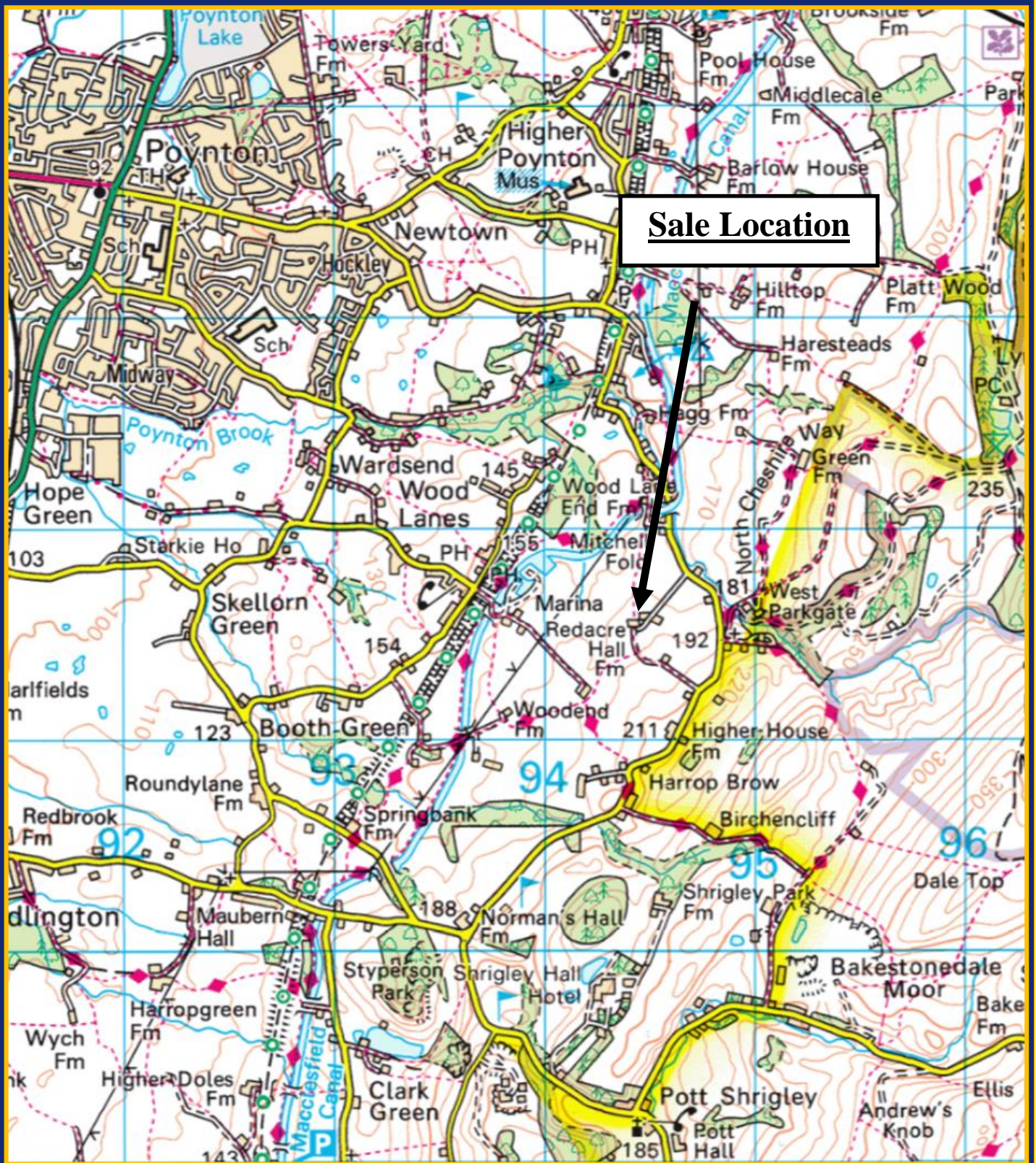
Clients Money RICS Regulations

We will account for the proceeds of the sale of all goods sold 14 days after the date of the sale. The proceeds will be held in our Barclays Clients Sales Account 20-48-70 10972037 which is a non interest bearing account. Where the proceeds (after charges) are less than £5 we reserve the right to pay these to a charity, subject to your agreement.

PRIVACY POLICY

We have recently updated our privacy policy and a copy is available either from our Leek office or on our website.

If you no longer wish us to retain your details on our records, please advise a member of our staff and we will ensure you are removed from our databases and will receive no further communications



Graham Watkins & Co
57 Derby Street, Leek, ST13 6HU
Tel: 01538 373308

Email: enquiries@grahamwatkins.co.uk